



Please do not print me!

Remember to print from page 2 to avoid wasting paper and ink.

If you do find me, then visit [twinkl.co.uk](https://www.twinkl.co.uk) to find out why **millions of educators** worldwide love twinkl.

A brief word about copyright...

By downloading this resource, you agree to the following:



You may use this resource for personal and/or classroom use only.

In order to support us, we ask that you always acknowledge www.twinkl.co.uk as the source of the resource. **If you love these resources, why not let others know about Twinkl?**



You must not reproduce or share this resource with others in any form. They are more than welcome to download the resource directly from us.

You must not host or in any other way share our resources directly with others, without our prior written permission.

We also ask that this product is not used for commercial purposes and also that you do not alter the digital versions of our products in any way.

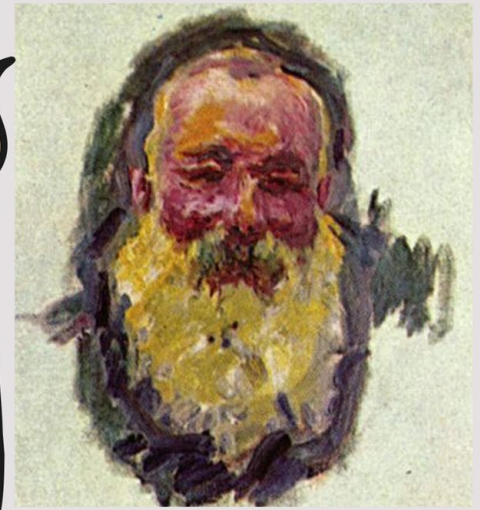
Thank you for downloading!

Twinkl Educational Publishing. Your first choice for easy to use, trusted and high quality teaching materials for educators and parents worldwide
- professionally crafted materials with a personal touch.

[twinkl.co.uk](https://www.twinkl.co.uk)

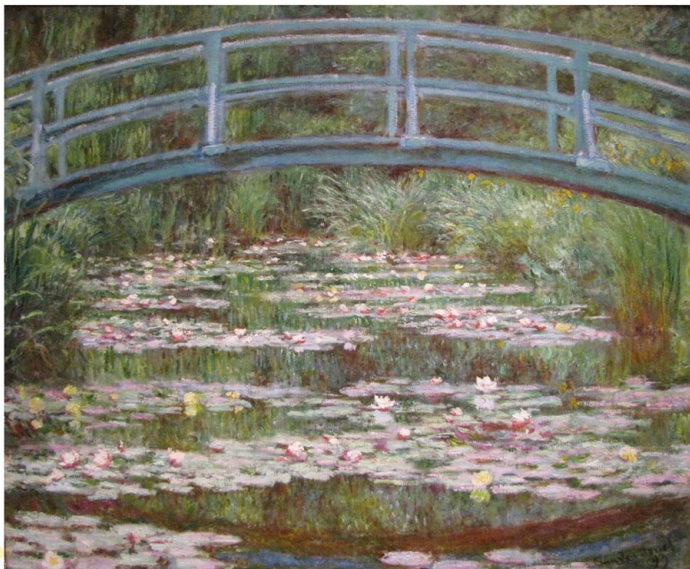
Artist Fact Sheet

**Oscar-
Claude Monet**
Born 1840



Oscar-Claude Monet was a French painter, born in 1840, and was a founder of Impressionist painting. This style of painting is named after Monet's painting, Impressions, Sunrise, which he exhibited in 1874. Monet was passionate about painting the French countryside and would often paint the same scene many times to capture the changing light and the different seasons. He is most famous for his paintings of lily ponds.

Monet's father hoped that he would join him in the family grocery business, but Monet wanted to become an artist. While attending secondary school, Monet made and sold charcoal caricatures of local people. He took drawing lessons and learnt to use oil paints. A fellow artist, Eugène Boudin, taught Monet outdoor techniques for painting.



Monet travelled to Paris, where he met several other young painters who would also become Impressionists. In 1861, he joined the army in Algeria, and was supposed to stay for seven years. However, he contracted typhoid fever, and his aunt intervened to get him released from the army, enrolling him on an art course. In 1862 he became an art student, meeting other artists, and painting with broken colours and rapid brushstrokes. This style of painting became known as Impressionism.

Work: Monet Selfportrait, The Japanese Footbridge, The Houses of Parliament



www.twinkl.co.uk

Monet had children, and married Camille Doncieux, before a war broke out. They lived in poverty, and later took refuge in England. Monet studied the work of British artists John Constable and Joseph Turner, whose landscapes inspired Monet's use of colour. In 1871, Monet left London to visit the Netherlands, before returning to France. In 1873 he bought a small boat that he used as a studio, painting landscapes and portraits. Monet submitted some of his paintings to the first Impressionist exhibition, held in Paris in 1874.



In 1876, Monet's wife became ill. She died in 1879, aged just 32. Monet was very sad at this time, but began to create some of his best paintings. Alice Hoschede, began to help Monet to raise his children, along with her own. Eventually, they moved in together, moving house several times, before marrying in 1892.

In 1883, the family moved into a house with a large garden, orchards, and a barn he used as a painting studio. He began to sell more of his paintings, allowing him to buy the house, some more land, and a water meadow. Monet hired several gardeners, giving them daily instructions and precise designs for how he

wanted his garden. He created lily ponds, which he would later paint in some of his best-known works. He continued to paint the lily pond, and his gardens, for the next 20 years.

Monet died at the age of 86, and was remembered at a simple funeral with 50 guests. His home and beautiful gardens were opened to visitors in 1980, and are visited by tourists from all over the world.



Work: I papaveri, Wheatstacks



www.twinkl.co.uk