



# SPELLBROOK CHURCH OF ENGLAND PRIMARY SCHOOL



LEARN TOGETHER - ENJOY TOGETHER - SUCCEED TOGETHER

## NEWSLETTER – 18<sup>th</sup> March 2022

### VALUE: JUSTICE

**Focus:** Seeing the whole picture

'Our purpose is to do what is right, not only in the sight of the Lord, but also in the sight of one another.'  
2 Corinthians 8.21



### FROM THE HEADTEACHER

This has been a challenging week for many within our school family. As the week has unfolded, we have seen an increasing rise in the cases of Covid-19. This has included 7 members of staff and at the last count 14 children.

Unfortunately, this seems to be the case across the region and much of the country. I do hope that everyone who currently has the virus recovers quickly. We have managed not only to keep all of the classes in school open, but also keep the learning going.

Some of our groups and interventions have not taken place and whole school assemblies have been replaced with collective worship within the classes. As both of our office staff have been off, but still trying to manage some work whilst unwell, I have really appreciated the patience that parents have shown when they have tried to contact us. I also recognise the extra time the teachers have given to responding to messages on Class Dojo. The staff who have been in, as well as those working from home, hoping the tests turn negative so they can be back, have been fantastic and a testament to our values and their own commitment.

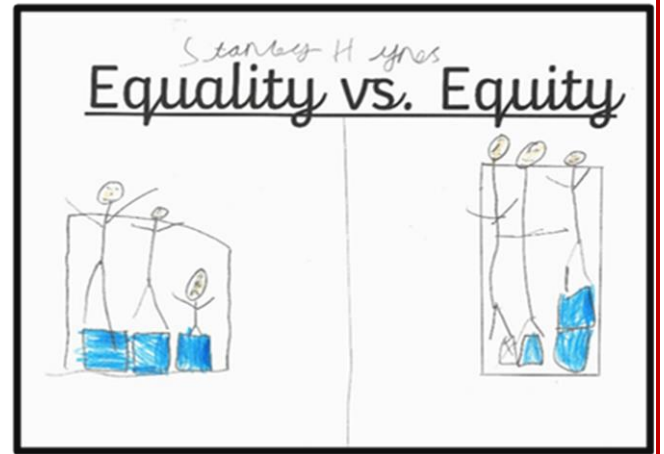


We did get outside to plant a couple of trees for the Queen's Green Canopy (QGC). QGC is a unique tree planting initiative created to mark Her Majesty's Platinum Jubilee in 2022 which invites people from across the United Kingdom to "**Plant a Tree for the Jubilee**". We have received two tiny saplings, one for a wild cherry and one a silver birch and will do our best to nurture these so that they grow into sturdy and beautiful trees. Mr Cattlin prepared the ground and our head prefects and some members from the School Council each added a spade of soil.



As part of our learning about justice, we have considered the ideas of equality and equity. This relates to the idea of tackling unfairness by providing what each individual needs rather than just having the same for everyone. Some children have shown their understanding through illustrations and drawings.

Have a good weekend and stay safe.  
Jeremy Fisher



## MESSAGE FROM GREAT ST MARY'S CHURCH

*Fr Simon writes:*

The situation in Ukraine continues to grind on with so many heartrending scenes of desperation. And, all the while, it seems the Russian people are being kept ill-informed about the reality of the war. This is an invasion instigated not by the Russian people but by Vladimir Putin and the undemocratic Russian authorities.



And so I'm pleased that the Ukraine conflict is being seen around the rest of the world as Putin's battle and not a war of the Russian people because it's preventing a head of steam building up of anti-Russian feeling. After all, it's so easy for us to stereotype a group of people so that they soon become a caricature and the enemy.



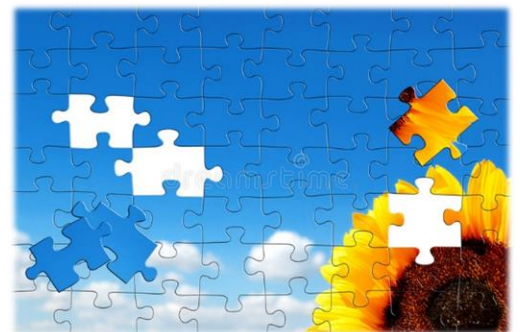
It's a trap we all easily fall into. We saw it during the Brexit debate with the portrayal of the two sides: one being Little Englanders - the other side being 'woke' Remoaners. We saw it in the early stages of Covid when President Trump tried to gain political capital by portraying the virus as the 'Chinese virus'. We see it in judgements about those who are struggling to make ends meet, we see it in north-south caricatures, we see it in debates about the value of the arts and education. We all do it as we see somebody appear to push into a queue or dress in a particular way.

Such stereotyping and caricaturing prevents us from seeing those around us as people with the potential to do good; individually and uniquely-crafted human beings, made in the image of God and loved by Him; small, though beautiful pieces in a global jigsaw which, if only it were to be completed how God intends, would be a picture of justice, peace, and contentment.

As you, as a school family, continue to battle with Covid hampering your lives, my prayers are with all those of you who are suffering at this time, along with the people of Ukraine and Russia.

God bless

*Fr Simon*



## BIRTHDAYS THIS WEEK



**Ruby**  
**Lucas**

## STARS OF THE WEEK

**Ruby**

- ✚ Luna for extending her learning during choosing time.

**Sapphire**

- ✚ Lisa for excellent story writing.
- ✚ Millie for fantastic listening and participation.

**Emerald**

- ✚ Zainab for trying really hard in her times tables.

**Diamond**

- ✚ Charlie C for superb improvement in handwriting and presentation.
- ✚ Marcia for great effort in all her work.

## ATTENDANCE THIS WEEK

Attendance Ladder



**Whole School**  
**Attendance – 74.2%**

**Whole School Target Set – 96%**

Please contact school on the first day of any absence. This can be done by calling **01279 723 204, Option 1** and then leaving a message on the absence line.

If you are going to be late, please also advise the school office to ensure a meal is ordered in time.

## NOTICES

- ✚ **PTA Mother's Day Gift Shop** opens on **Monday 21<sup>st</sup> March to Friday 25<sup>th</sup> March, while stocks last.** Gifts are £3 each and children can bring in money in an envelope or wallet.
- ✚ **Ruby Class Parents Evening** takes place on **Tuesday 22<sup>nd</sup> March from 2.00 – 4.20 pm.** If you have not yet booked a meeting, please do so on Arbor. If you are having difficulties booking a meeting, please contact the office.
- ✚ **Big Walk and Wheel Week – from Monday 21<sup>st</sup> March to Thursday 31<sup>st</sup> March,** we are inviting children to walk, scoot or cycle to school on as many days as possible. Due to staff illness, we will not be parking and striding from the Three Horseshoes Pub. If parents wish to park in nearby layby's and walk to school with their children, they are more than welcome to.

## NEXT WEEK'S MENU

Day	Menu
Monday	<ul style="list-style-type: none"> <li>❖ Beef Burger in a Bun (Red)</li> <li>❖ Beany Bolognaise (Green)</li> <li>❖ Jacket Potato (Yellow)</li> </ul>
Tuesday	<ul style="list-style-type: none"> <li>❖ Creamy Chicken Pasta (Red)</li> <li>❖ Quorn Hot Dog (Green)</li> <li>❖ Jacket Potato (Yellow)</li> </ul>
Wednesday	<ul style="list-style-type: none"> <li>❖ Roast Chicken (Red)</li> </ul>

## DATES FOR YOUR DIARY

Date	Event
21/03/22 – 25/03/22	PTA Mother's Day Gift Shop
22/03/22	Ruby Class Parents Evening 2.00 – 4.20 pm
30/03/22	Sapphire Class Last Swimming Lesson
31/03/22	PTA Easter Egg Hunt
31/03/22	Last Day of Term
01/04/22	Inset 4
19/04/22	First Day Back



	❖ Crispy Topped Vegetarian Pie (Green) ❖ Jacket Potato (Yellow)	02/05/22	Bank Holiday
		03/05/22	Class Photos
		30/05/22 – 03/06/22	Half Term
Thursday	❖ Organic Beef Lasagne (Red) ❖ Cheese Pinwheel (Green) ❖ Jacket Potato (Yellow)	06/06/22	Inset 5
		08/06/22 – 10/06/22	Diamond Class Residential
Friday	❖ Salmon Fish Fingers (Red) ❖ Cheese & Tomato Pizza (Green) ❖ Jacket Potato (Yellow)	14/07/22	Secondary Transition Day
		20/07/22	Last Day of Term
		21/07/22	Occasional Day
		22/07/21	Jubilee Bank Holiday in lieu

Contact: [admin@spellbrook.herts.sch.uk](mailto:admin@spellbrook.herts.sch.uk)

Website: [www.spellbrook.herts.sch.uk](http://www.spellbrook.herts.sch.uk)



## Spring time at Great St Mary's Church

**SHROVETIDE PANCAKES**  
A seasonal Delight after the 9.30am service  
Sunday 27th February - 10.45am - Church House

**ASH WEDNESDAY EUCHARISTS**  
With Imposition of ashes  
Wednesday 2nd March - 10am & 7.45pm - Church

**LENT LUNCHES**  
Soup, cheese and more  
Saturdays in Lent - 1pm till 2pm - Church House

**LENT TALKS 2022**  
Fr Simon leads four reflections on the eucharist  
Wednesdays 9th, 16th, 23rd, 30th March - 7.45pm - Parish Hall

**MUSTARD SEED**  
A short, informal service with crafts for children followed by food  
Sunday 20th March - 4pm - Church

**MOTHERING SUNDAY SERVICE**  
With the giving out of plants and flowers  
Sunday 27th March - 9.30am - Church

**'THE CRUCIFIXION'**  
A performance by the church choir of John Stainer's popular oratorio  
Sunday 3rd April - 5pm - Church

**PALM SUNDAY PROCESSION**  
The traditional procession to church for the 9.30am service  
Sunday 10th April - assemble 9am - Bell Street carpark

**HOLY WEEK MEDITATIONS**  
Three meditations followed by the service of compline  
Monday 11th to Wednesday 13th April - 8pm - Church

**MAUNDY THURSDAY SERVICE AND WATCH**  
Thursday 14th April - 8pm - Church



Website: [www.sawbridgeworthchurch.org.uk](http://www.sawbridgeworthchurch.org.uk)



## Spring time at Great St Mary's Church

**GOOD FRIDAY - Friday 15th April**  
9.30am - The Stations of the Cross - Church  
10.30-12.30pm - Hot cross buns and coffee - Church House  
12.30-1.45pm - Frugal lunch - Church House

**GOOD FRIDAY LITURGY**  
A remembrance of our Lord's passion and death  
Friday 15th April - 2pm - Church

**AN EASTER CELEBRATION**  
Easter crafts and informal worship for younger members of the family  
Holy Saturday 16th April - any time between 2 & 4pm - Church

**EASTER VIGIL SERVICE**  
The first celebration of Easter  
Holy Saturday 16th April - 8pm - Church

**EASTER DAY EUCHARIST**  
With joyful Easter hymns, Handel's 'Hallelujah Chorus' and followed by an Easter egg hunt and Prosecco  
Sunday 17th April - 9.30am - Church

**ST GEORGE'S PROCESSION AND SERVICE**  
The annual service involving the town's uniformed organisations  
Sunday 24th April - 3pm - Church

**SAWBRIDGEWORTH MAY FAYRE**  
Displays and activities for all the family  
Sunday 1st May - 12 till 4pm - Church

**ASCENSION DAY EUCHARIST**  
The annual celebration of our Lord's ascension to heaven  
Thursday 26th May - 7.45pm - Church

**PLATINUM JUBILEE BANK HOLIDAY**  
Including art and photography competition  
The Big Tea in the churchyard - The Platinum Jubilee Civic Service  
Thursday 2nd - Sunday 5th June

**THE GREAT ST MARY'S SUMMER FESTIVAL**  
Including flower festival, bridal gown display, wood sculpting, and concert  
Saturday 2nd - Sunday 3rd July



Website: [www.sawbridgeworthchurch.org.uk](http://www.sawbridgeworthchurch.org.uk)





**sustrans**  
**BIG WALK AND WHEEL**  
21 March – 1 April 2022

**Go on an amazing journey every day**

- ✓ Be active and feel more energised
- ✓ Help the environment by replacing a car journey
- ✓ Help your school win some fantastic prizes

Are you taking part in the UK's biggest walking, wheeling, scooting and cycling to school competition?

**21 March–1 April 2022**

[www.bigwalkandwheel.org.uk](http://www.bigwalkandwheel.org.uk)

Headline sponsor: **SCHWALBE**

Sustrans is a registered charity no. 288620 (England and Wales) SC205930 (Scotland). © Sustrans 2022

**sustrans**  
JOIN THE MOVEMENT

**ONLINE course starting April 2022**

**Families Feeling Safe**  
Supporting families with Protective Behaviours

**A FREE course for Mums, Dads, Step-parents and Carers**



**Tuesday mornings Online**  
10.00am–11.30am

**19, 26 April, 3, 10, 17 & 24 May 2022**  
Sessions will run on Zoom



Please like us on Facebook for further updates @familiesfeelsafe

Are you looking for some strategies and new ideas to help improve family life? This course can help you to

- Understand the links between Feelings, Thoughts and Behaviour
- Understand what may be influencing your child's behaviour
- Respond to a range of feelings e.g. stress, anger, anxiety and worries
- Improve communication to build better relationships
- Build on your own and your child's strengths
- Learn strategies to help you and your family feel safe and have problem-solving skills for life

**"I wish I had done the course sooner"**

Places are funded by HCC for families living in Hertfordshire and there are eligibility criteria

**For eligibility and to book your FREE place please email:**  
[enquiries@familiesfeelsafe.co.uk](mailto:enquiries@familiesfeelsafe.co.uk)

**Tel: 07748 332606**

**Hertfordshire**

Families Feeling Safe Protective Behaviours Services has been funded through HCC to provide Families Feeling Safe programmes across Hertfordshire. We deliver Protective Behaviours training for professionals and provide programmes and workshops to children and their families. [www.familiesfeelsafe.co.uk](http://www.familiesfeelsafe.co.uk) Email: [enquiries@familiesfeelsafe.co.uk](mailto:enquiries@familiesfeelsafe.co.uk)



**Best THEATRE ARTS**

**WEST END STORY**

**Musical Theatre Holiday Camp**

[besttheatrearts.com/westend](http://besttheatrearts.com/westend)

*Find your light this Easter*

**WEST END STORY**

**This Easter, our Holiday Club will make a brand new musical theatre show in just five days!**

Inspired by your West End favourites and guided by a host of experienced, industry professionals, they'll weave together music, drama and dance to make something unique, ensuring everyone gets a chance to shine!

<b>WHEN?</b> 4 - 8 April 2022 10am - 4pm daily	<b>WHERE?</b> Southern Maltings Ware	<b>WHO?</b> Ages 6-16 Primary, Junior & Senior
<b>PRICES</b> £180 for the full week Sibling discounts available Childcare vouchers accepted Early drop-off option	<b>PERFORMANCE</b> 8 April 3.15pm Function Room Southern Maltings	<b>Best Musical Theatre</b>

[info@besttheatrearts.org.uk](mailto:info@besttheatrearts.org.uk)  
[besttheatrearts.com/westend](http://besttheatrearts.com/westend)  
01727 759634



THE UK'S FAVOURITE

# BARRACUDAS

Activity Day Camps

BOOK NOW!

... for great rates!

USE CODE  
**SCHOOLS22**  
FOR £10 OFF  
WHEN BOOKING  
A MINIMUM  
OF 2 DAYS!

OFFER AVAILABLE  
UP UNTIL  
25th March  
2022

EXCLUSIVE  
EASTER  
OFFER!

FUN AND ADVENTURE  
FOR 4½ - 14 YEAR OLDS

QUOTE CODE: **SCHOOLS22**

FOR £10 OFF YOUR BOOKING

BOOST THEIR CONFIDENCE AT CAMP!

UNRIVALLED  
ACTIVITIES FOR  
KIDS IN THE  
SCHOOL  
HOLIDAYS

Giving every child such an

AMAZING  
EXPERIENCE

they can't wait to come back!

Visit [barracudas.co.uk](https://barracudas.co.uk)  
or call 01480 467567

